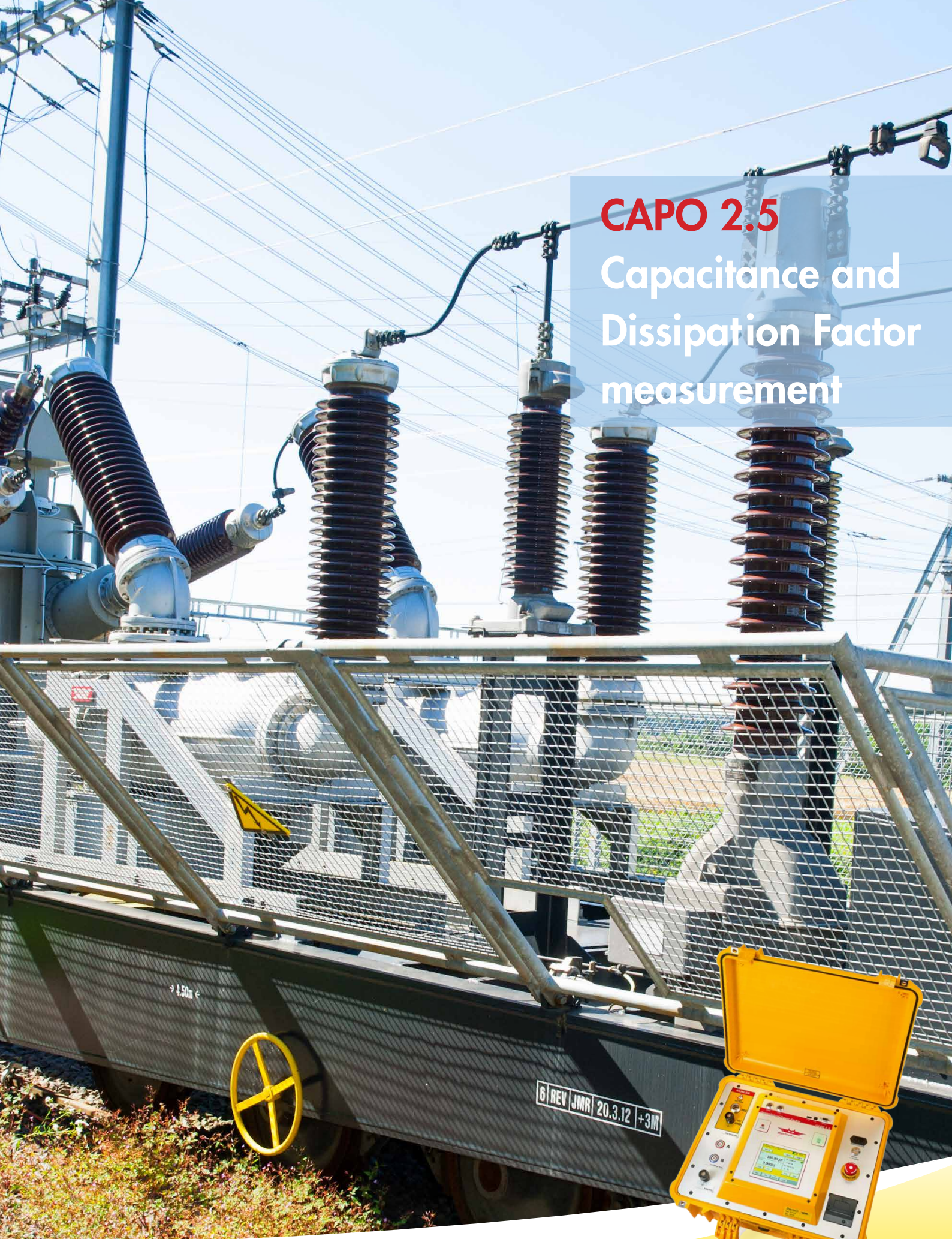


CAPO 2.5

Capacitance and Dissipation Factor measurement



The CAPO 2.5 is specially designed for fast and easy field measurement, with the well known high precision and quality of Raytech. It is a world unique, line- or **battery-operated** instrument, built into a portable rugged case, making it perfect for field use.

Operating range -10°C to 60°C
 Input power 88 to 264 VAC
 47 ... 63 Hz

Measured values:

Dissipation Factor $\tan \delta$
 Power Factor $\cos \varphi$
 Capacitance
 Inductance
 Quality Factor
 Power (Watts)
 Power@10kV



CAPO 2.5

Measurement Parameters

	Range	Accuracy	Resolution
Dissipation Factor $\tan \delta$	0 ... 0.1	$\pm 0.5\% \text{ Rdg} \pm 1 \times 10^{-4}$	1×10^{-5}
	0.1 ... 1	$\pm 0.5\% \text{ Rdg} \pm 1 \times 10^{-4}$	1×10^{-4}
	>1	$\pm 0.5\% \text{ Rdg}$	3 Digits
Power Factor $\cos \varphi$	0 ... 0.1	$\pm 0.5\% \text{ Rdg} \pm 1 \times 10^{-4}$	1×10^{-5}
	0.1 ... 1	$\pm 0.5\% \text{ Rdg} \pm 1 \times 10^{-4}$	1×10^{-4}
Capacitance @ 50 Hz	0.00pF ... 1.3μF @ 500V	$\pm 0.3\% \text{ Rdg} \pm 0.3\text{pF}$	0.01pF or 5 Digits
	0.00pF ... 254nF @ 2.5 kV		
@ 60 Hz	0.00pF ... 1.1μF @ 500V	$\pm 0.3\% \text{ Rdg} \pm 0.3\text{pF}$	0.01pF or 5 Digits
	0.00pF ... 212nF @ 2.5 kV		
Test Voltage	up to 2500V _{rms} (45 ... 400Hz)	$\pm 0.5\% \text{ Rdg} \pm 1\text{V}$	1V
Test Current	up to 200mA _{rms}	$\pm 0.3\% \text{ Rdg} \pm 1\mu\text{A}$	0.1μA or 4 Digits
Output Power	0 ... 500 VA		
Output Frequency	10Hz - 400Hz (Step 0.5Hz)	$\pm 0.01\%$	0.1Hz

Features

- Battery operated, world unique
- Built-in Standard Capacitor
- Test Frequency 10 Hz - 400 Hz
- Easy export of results by USB key
- External switch for safe operation
- Internal thermal printer

Accessories

- Cable bag including standard cable set:
 - HV-cable 10m
 - 2 measurement cables 10m
 - Safety switch 2m
 - HV-ground 10m
 - Safty ground 10m
 - Power cord depending on country of distribution
- 2 Paper Rolls
- Instruction Manual

Specifications**Model**

CAPO 2.5

Size

L: 521mm (20.5")

W: 432mm (17")

H: 216mm (8.5")

Weight

22.2 kg (48.9 lbs.)

Interfaces

USB 2.0 full speed (1 host, 1 device)
 and 9 Pin RS232 serial

Memory Storage

Internally stores more than
 10 000 test results

Panel Display

5.7" Color LCD with LED back lighting

Front Panel

Sealed, Anodized

- TP 01: External temperature probe
- Safety switch 10m



Raytech GmbH

Oberebenenstrasse 11

CH-5620 Bremgarten

www.raytech.ch

Phone +41 56 648 60 10

Fax +41 56 648 60 11

welcome@raytech.ch

Specifications subject to improvement at any time.

