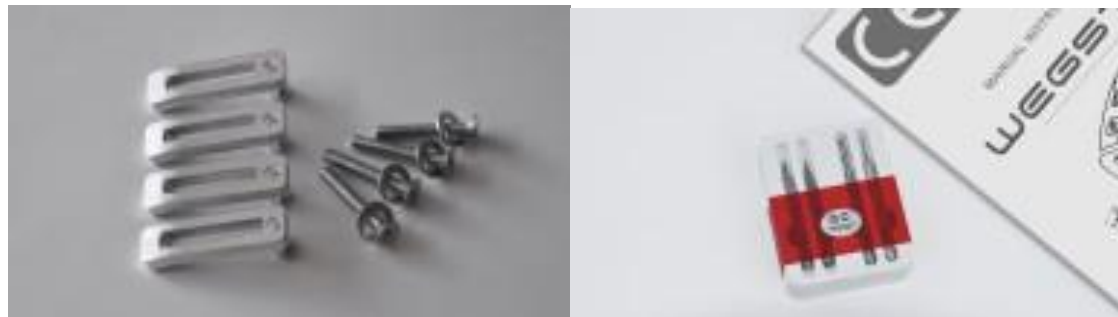
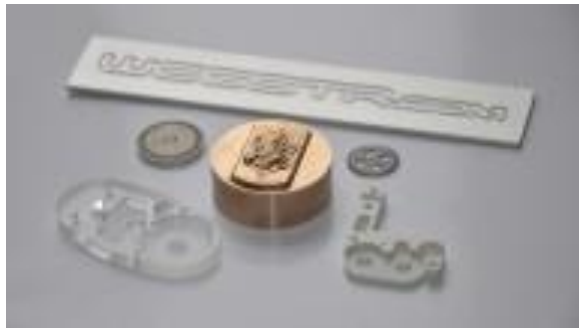
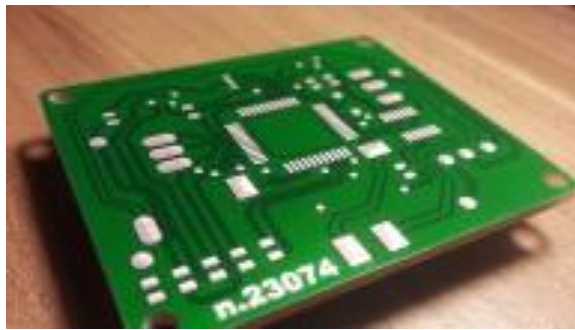


EN

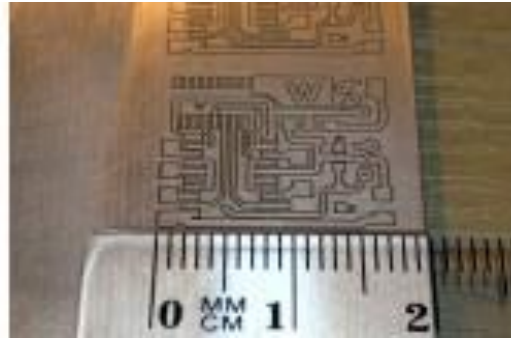








TEST diamond engraving into glass



- Description

TECHNICAL SPECIFICATIONS

Milling workspace	- 140 mm (5.51 inch) (X) 200 mm (7.87 inch) (Y) 40 mm (1.58 inch) (Z)
One step of the stepper motor	- 0.004 mm (0.000157 inch)
Machine dimensions	- 380 x 460 x 290 mm 15 x 18.1 x 11.4 inch
Spindle	- brushless motor
Diameter of spindle	- 3.175 mm (0.125 inch)
Connectivity	- USB
USB cable length	- 1.6 m (63 inch)
Repeatability	- 0.02 mm (0.000787 inch)
Machine weight	- 7 kg (15,5 lbs)
Max. speed - X axis	- 170 mm/min (6,7inch/min)
Y axis	- 170 mm/min (6,7inch/min)
Z axis	- 170 mm/min (6,7inch/min)
Max. height of work piece	- 40 mm (1.58 inch)
Spindle speed	- 11 000 rpm.
Certification	- CE
Country of origin	- Czech Republic

USB connection



Compatible with: **USB 1.x**
USB 2.0
USB 3.0
USB 3.1

WEGSTR features a long-life brushless spindle motor.

While standard DC motors suffer from carbon brush wear, WEGSTR uses a combination of DC circuitry and a brushless AC motor for superior performance and durability.

The machine also features electronic overload protection of the spindle motor.