

**Fixed Antenna Operates From 2.4 GHz to 2.5 GHz
 With a Nominal 11 dBi Gain N Female Input
 Connector Rated**

Electrical Specifications*

Description	Min	Typ	Max	Units
Frequency	2.4		2.5	GHz
Impedance		50		Ohms
Nominal Gain	11			dBi
Gain Variation		1		dBi
Horizontal 3dB Beam Width		360		Degrees
Vertical 3dB Beam Width		9		Degrees
Input Power			150	Watts
Input VSWR			1.5:1	

* Values at 25°C, sea level

Mechanical Specifications

Size

Length 40.5 in [102.87 cm]
 Weight 6.6 lbs [2.99 Kg]

Environmental Specifications

Temperature

Operating Range -40 to +60 deg C
 Wind Loading 150 MPH [241.4 KPH]
 Humidity 5% - 95 %

Compliance Certifications (visit www.FairviewMicrowave.com for current document)

RoHS Compliant Yes
 REACH Compliant Yes

Plotted and Other Data

Notes:

- Values at 25 °C, sea level
- Lightning Protection added by direct grounding.



Features:

- Design: Fixed
- Frequency Range: 2.4 to 2.5 GHz
- Polarization: Vertical
- Interface 1: N Female
- Number of Output Ports: 1

Fairview Microwave
 1130 Junction Dr. #100
 Allen, TX 75013
 Tel: 1-800-715-4396 / (972) 649-6678
 Fax: (972) 649-6689
www.fairviewmicrowave.com
sales@fairviewmicrowave.com

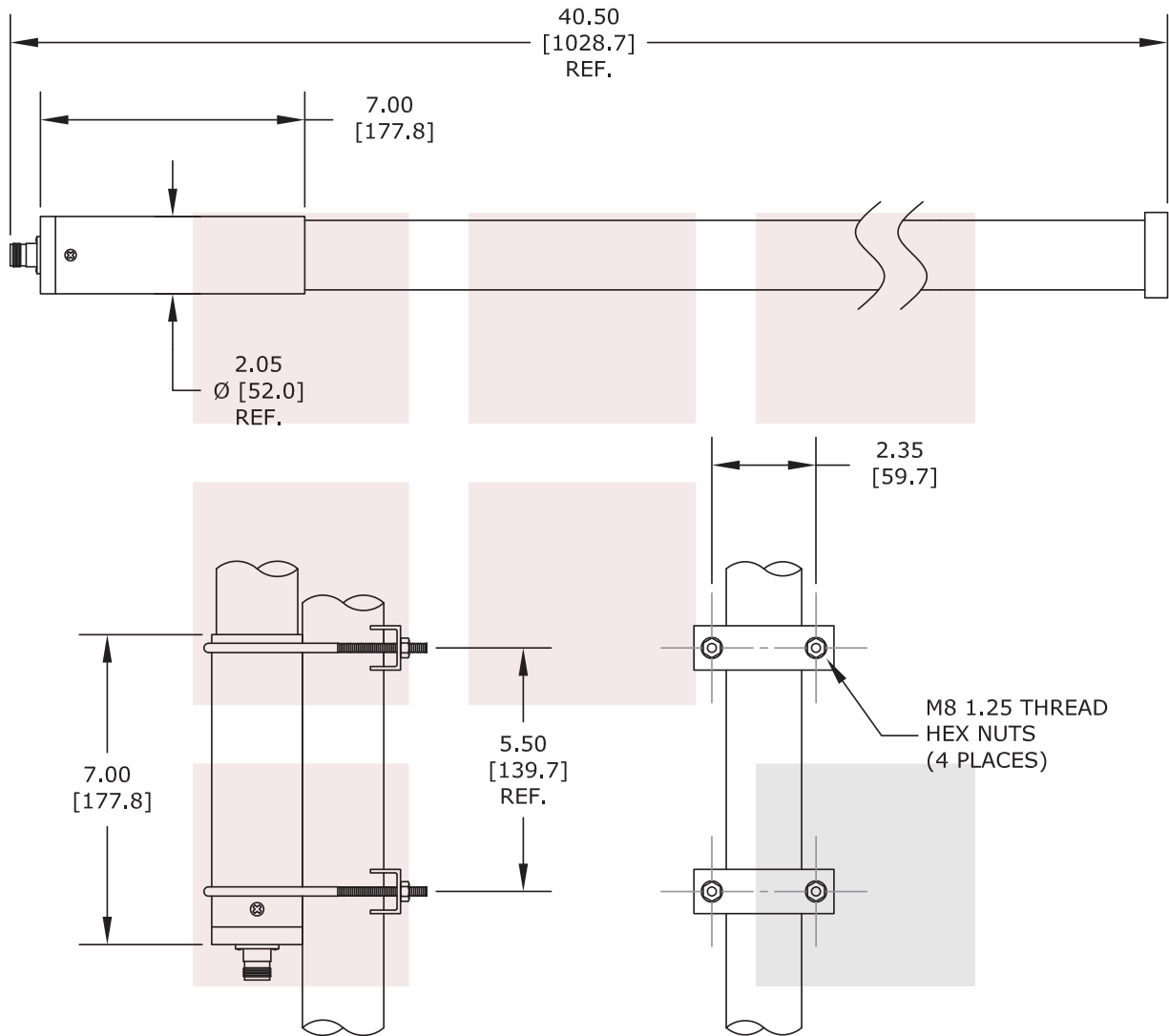
Fixed Antenna Operates From 2.4 GHz to 2.5 GHz With a Nominal 11 dBi Gain N Female Input Connector Rated from Fairview Microwave is in-stock and available to ship same-day. All of our RF/microwave products are available off-the-shelf from our ISO 9001:2008 certified facilities in Allen, Texas. Fairview Microwave is RF on-demand.

For additional information on this product, please click the following link: [Fixed Antenna Operates From 2.4 GHz to 2.5 GHz With a Nominal 11 dBi Gain N Female Input Connector Rated SANT-2013](#)

URL: <http://www.fairviewmicrowave.com/antenna-11-dbi-n-female-sant-2013-p.aspx>

The information contained in this document is accurate to the best of our knowledge and representative of the part described herein. It may be necessary to make modifications to the part and/or the documentation of the part, in order to implement improvements. Fairview Microwave reserves the right to make such changes as required. Unless otherwise stated, all specifications are nominal. Fairview Microwave does not make any representation or warranty regarding the suitability of the part described herein for any particular purpose, and Fairview Microwave does not assume any liability arising out of the use of any part or documentation.





FAIRVIEW MICROWAVE INC. ALLEN, TX 75013 WWW.FAIRVIEWMICROWAVE.COM		NOTES: 1. UNLESS OTHERWISE SPECIFIED ALL DIMENSIONS ARE NOMINAL. 2. ALL SPECIFICATIONS ARE SUBJECT TO CHANGE WITHOUT NOTICE AT ANY TIME. 3. DIMENSIONS ARE IN INCHES [mm].			
TITLE Fixed Antenna Operates From 2.4 GHz to 2.5 GHz With a Nominal 11 dBi Gain N Female Input Connector Rated		DWG NO SANT-2013		CAGE CODE 3FKR5	
CAD FILE	062714	SHEET	SCALE	N/A	SIZE A 2233