

AM5212ZTL



Also work with Accessory - N3C-R (Ring Light Cap)

The Dino-Lite AM5212ZTL is one of the latest TV-interface microscopes that feature an adjustable polarizer to help suppress unwanted glare or reflections with long working distance (LWD) feature. This LWD model yields higher magnification and larger depth of field under the same working distance though the highest attainable magnification is smaller. This feature provides greater clearance between the microscope and the viewing object, which can be helpful for applications such as repairing or assembling, quality inspection, or jewelry fabrication.

Combined with totally revamped optics and high resolution 960H, it is the latest upgrade over its predecessors such as the AM4112 and AM5212 microscopes with TV output. Also, like all standard magnification models on the Edge series, this microscope incorporates a 10X to 140X magnifying range and interchangeable front caps available to suit different purposes. The current available options are close cap, open cap, diffuser cap, extended cap, long cap, and sidelight cap.

The AM5212ZTL does not require a computer or bundled software to operate and works simply by connecting it to a conventional TV using the supplied composite video cable. It is available in either NTSC or PAL video standards depending on your region of residence.

Overview



High quality optics

This Dino-Lite Edge series microscope maximizes observed details with state-of-the-art lens design and super sharp resolving power.



TV connectivity

Connect the microscope to a TV monitor via the composite video cable for either NTSC or PAL video standards in 960 x 480 high resolutions.



Largest magnification range with long working distance

The wide magnification range (10x to 140x) is achieved with long working distances greater than 29mm (without front cap), which can be helpful when clearance is required between the microscope and the viewing object.



Adjustable polarizer

This model includes a freely adjustable polarizer that is useful for suppressing unwanted glare or reflection from object surface to any extent, making it ideal for most applications.



MicroTouch button

Switch on/off the LEDs quickly and conveniently with the MicroTouch button. This small, round, touch-sensitive button is configured to allow you take control of the lighting during observation with a simple tap of a finger.



Adaptable cap design

This model features a detachable and interchangeable front cap that extends its range of use, as different caps are available for various applications. Removing the front cap provides greater working distance and access to the full magnification range.

Interchangeable Front Caps



N3C-C / Close Cap

This cap protects the lens and LED lights from contamination of dust, debris, or moisture.



N3C-D / Diffuser Cap

This cap diffuses the LED light.



N3C-D2 / Opal Diffuser Cap

This cap diffuses the LED light.



N3C-E / Extended Open Cap

Dino-Lite Edge (stand type) will focus at approximately 200x when the cap touches surface.



N3C-L / Long Cap

This cap is useful to adjust the working focus of Dino-Lite Edge at lower magnification.



N3C-O / Open Cap

This is the standard cap for normal usage.



N3C-S / Sidelight Cap

This cap creates images with more depth and texture.

Information about working distance and field of view

M	WD	FOV (x)
20	159	34
50	48.5	11
100	31	5
150	32	3.1

M = magnification rate WD = working distance (without front cap) FOV = field of view DOF = depth of field Unit = mm

Specification

Model : AM5212ZTL Dino-Lite Edge

Interface : Composite video

Product Resolution : 960H

Magnification Rate : 10x~140x

Microtouch : Tap to turn On/Off LEDs

Lighting : 8 white LEDs

Unit Weight : 100g

Unit Dimension : 10.5cm (H) x 3.2cm (D)

Package Dimensions : 16cm(L) x 16cm(W) x 6cm(H)

N3C-R (Ring Light Cap)



In most macro observation, a ring light may help to reveal more details by generating shadow-less illumination. Working seamlessly with the Dino-Lite Edge series, the N3C-R front cap is a unique and the simplest solution designed to provide ring illumination for a microscope. The 6.5 cm (2.5 inch) diameter N3C-R fully utilizes the Dino-Lite's built-in LEDs by redirecting it to form a focused, diffused, and uniform ring-light. For polarizer model such as AM4115ZT, the polarizer can still be used for suppressing the unwanted glare or reflection when using with N3C-R. Without the clutter of mounting and powering an external ring light, thus no heat and noticeable weight been added, the clip-on N3C-R economically provides alternative illumination and adds more flexibility to Dino-Lite's applications.

Note: The N3C-R has best working distance in the range of about 2 to 15 cm. It may not be suitable for short working distance operation, and is not compatible with high magnification models such as AM4515T5 or AM4515T8.

Specification

Model : N3C-R Ring Light Cap

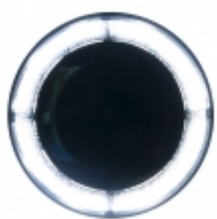
Compatible Dino-Lite Models : Dino-Lite Edge LWD models (TL, ZTL)

Unit Dimension : 15.5 mm (H) x 65 mm (D)

Materials : Polycarbonate with sputtered aluminum coated

Unit Weight : approx. 8 g

Gallery



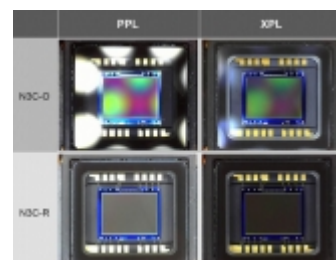
Ring light projected through N3C-R



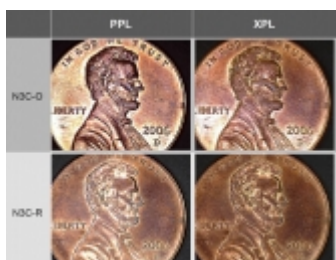
Dino-Lite EDGE with N3C-R



RK-10 & Dino-Lite EDGE with N3C-R



Reflection or glare comparison of using N3C-R, polarizer, and both



Reflection or glare comparison of using N3C-R, polarizer, and both



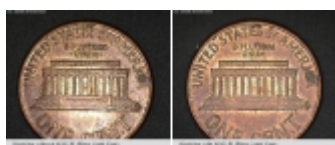
PCB 1



PCB 2



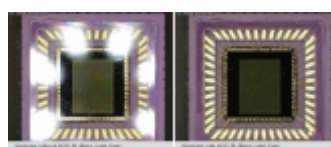
PCB 3



Coin 2



Coin 1



IC



Watch