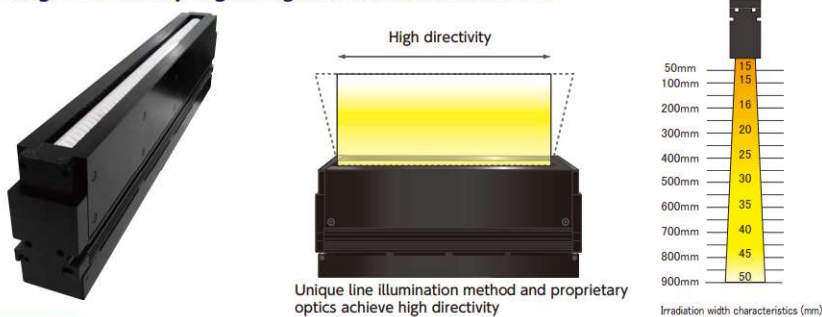


High-brightness Line Illumination «LLRRC Series»

LLRRC Series (Old Model : LLRR)

High-directivity high-brightness line illumination



Customizable

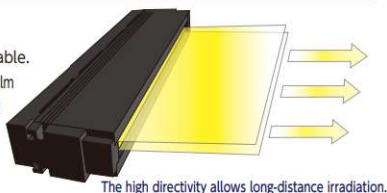


Infrared

P66

Features

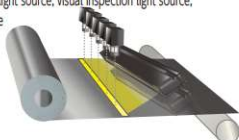
- High-directivity, high-brightness line illumination model
- Unique optical structure can detect defects previously undetectable.
- At least 3x the illuminance with directivity equivalent to that of light control film
- Longer-distance irradiation than conventional line illumination is enabled by independently-developed high-directivity optical design.
- Best suited for photographing high-speed work with a line camera



Application example

Visual inspection of steel plates

Steel plate inspection, glass inspection, sheet inspection, metal surface inspection, edge inspection, line sensor light source, visual inspection light source, image processing light source



Installation method

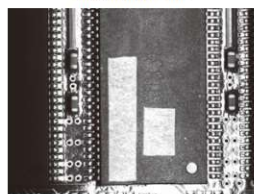
Slot-style installation method

Installation slot compatibility with commercially-available M4 hexagon nuts (JIS) provides flexibility in a variety of installations.

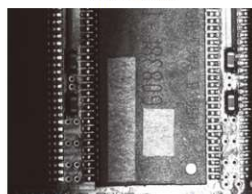


Example of imaging

Line Illumination



LLRRC Series



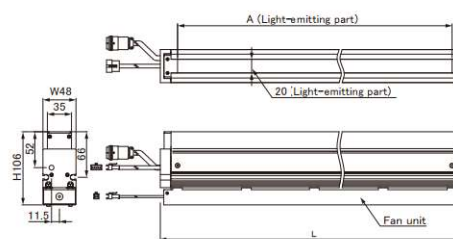
By taking advantage of enhanced directivity lights, you can read print clearly.

Product Specifications

Model	LxWxH (mm)	Light-emitting part A (mm)	Power consumption (white) (W)	Input voltage (V)	Example of applicable power supply
LLRRC100F*	150x48x106	100	38.4	48	LPDCJ1A-48301W-R8
LLRRC200F*	250x48x106	200	76.8	48	LPDCJ1A-48301W-R8
LLRRC300F*	350x48x106	300	115.2	48	LPDCJ1A-48301W-R8
LLRRC400F*	450x48x106	400	153.6	48	LPDCJ1A-48301W-R8
LLRRC500F*	550x48x106	500	192	48	LPDCJ1A-48301W-R8
LLRRC600F*	650x48x106	600	230.4	48	LPDCJ1A-48301W-R8
LLRRC700F*	750x48x106	700	268.8	48	LPDCJ1A-48601W-R8
LLRRC800F*	850x48x106	800	307.2	48	LPDCJ1A-48601W-R8
LLRRC900F*	950x48x106	900	345.6	48	LPDCJ1A-48601W-R8
LLRRC1000F*	1050x48x106	1000	384	48	LPDCJ1A-48601W-R8

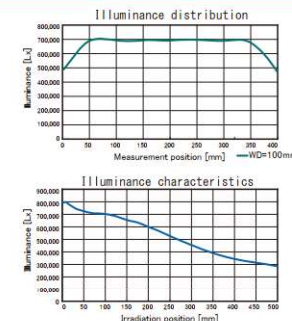
- *in Model : Emission color W (white) R (red) G (green) B (blue)
- Available emitter length size : units of 100 mm
- For details about other sizes, contact our sales department.

Outer dimensions



* Product specifications are subject to change without notice.

Data (Typical example : LLRRC400FW)

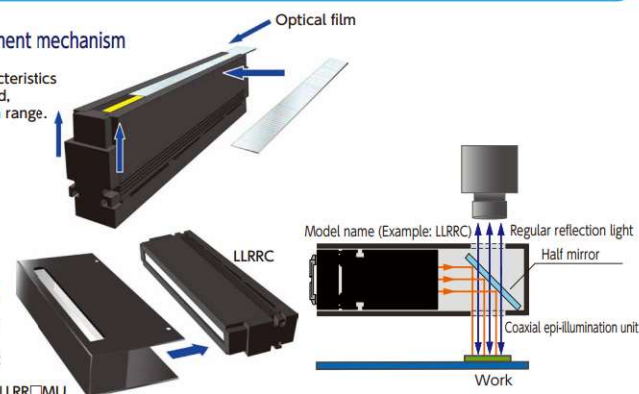


* Graph information (for reference only) does not guarantee product quality.

Example of customization

Simple attachment/detachment mechanism

Optical films with various characteristics can be easily attached/detached, greatly extending the inspection range.



Coaxial epi-illumination unit

Irradiation in the same axial direction as the camera lens dissipates diffuse peripheral light for increased contrast